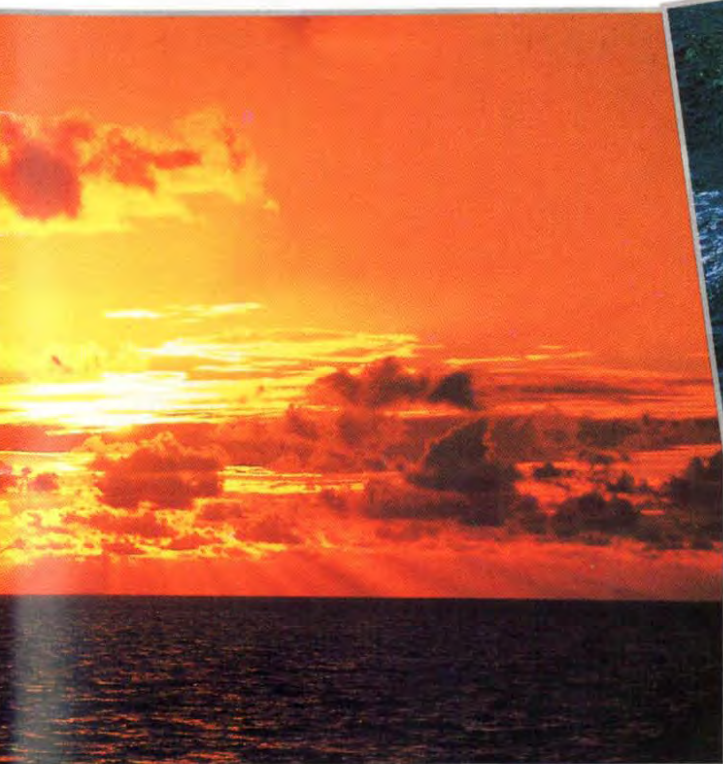


BLUE OCEAN CRUISER
BY X-YACHTS OF DENMARK



X-482

HEADING FOR ADVENTURE



POWER WITH CONTROL

ied to the dock the X-482 is a beautiful yacht. Under sail she is nothing short of stunning.

This is where the X-482 stands head and shoulders above her competition. Niels Jeppesen has drawn a sweet, easily driven hull that is incredibly stiff yet sea kind. In technical terms, the X-482's RMC for 1 degree of heel is 335 kpm.

By comparison a modern IMS racer of similar size has an RMC of 290-300 kpm! The higher the number, the stiffer the yacht. Thus the X-482 is a very powerful yacht, with excellent stability and sail carrying ability. She is a force to be reckoned with in strong winds, and in lighter conditions, her large, yet easily controlled sail plan makes her a yacht very hard to beat.

X-482's have achieved great results on the International racing scene - from Overall CHS Victory in China Sea Race Series - to Dutch IMS Championship, beating purpose designed and built. Pure race oriented machines on both events.



X-YACHTS IS OWNED BY ITS THREE FOUNDERS



Lars Jeppesen, World Class racing sailor, is responsible for quality control, purchasing, Boat Shows and after sales service.



Birger Hansen, experienced cruising and racing sailor, fiber glass specialist handles production and is in charge of the Scandinavian market.



Niels Jeppesen, accomplished cruising and racing sailor, is responsible for design and development of new models.







FROM STRENGTH TO STRENGTH

The X-482 is not a yacht built in isolation, but she is the latest in a successful line of performance cruising yachts, most recently the X-612. Each boat in this progression has borrowed something from the last, and each has given something to the next. In the X-482 are embodied many of the details that have made the X-612 a sensation in the big boat cruising market, but at the heart of each is the yard's commitment to building tough, reliable cruising yachts that combine a sparkling sailing performance with more traditional boat building values of strength, timeless design and durability.

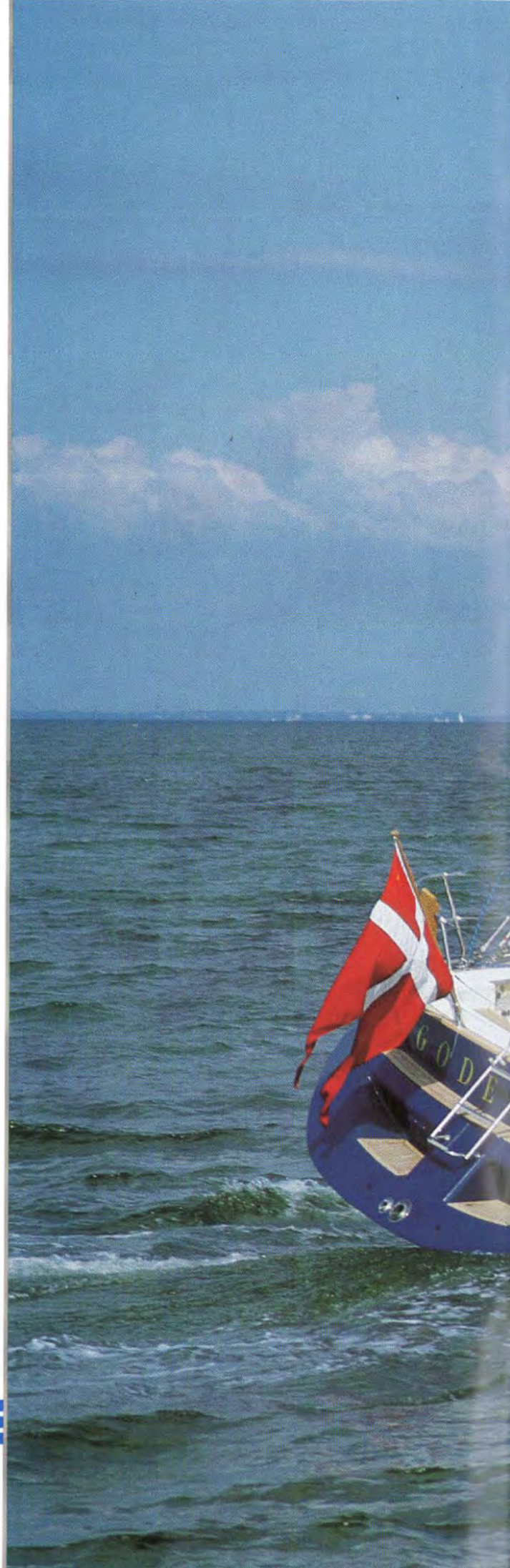
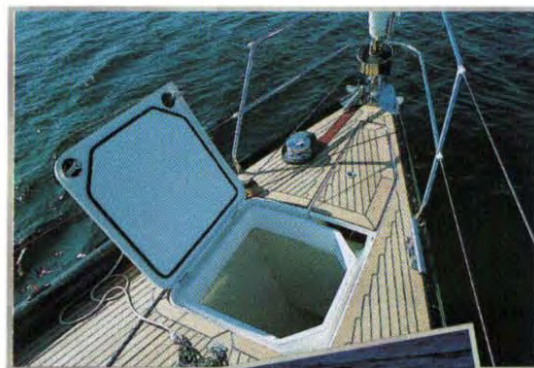
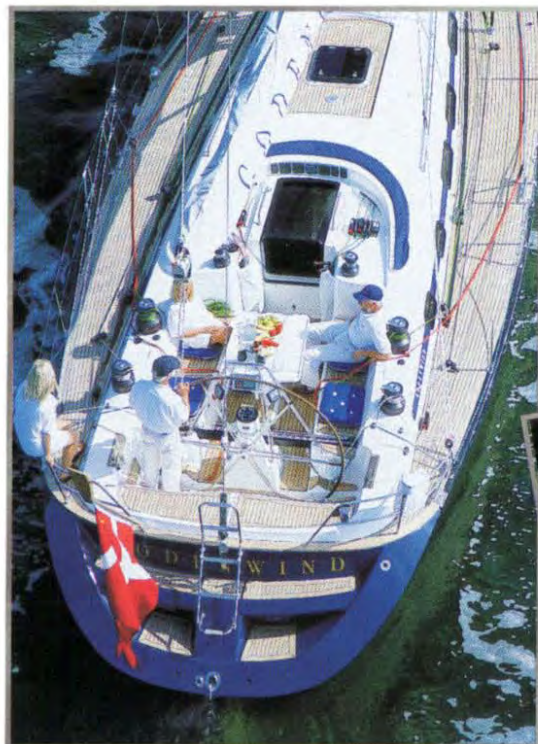
This blend of strength and performance is not always an easy one to achieve, but at the heart of the X-482 is a construction that allows to fulfill this much sought after goal.

Key to every X-Yachts' model is a massive TBS galvanized girder system that accepts keel and rig loads. In the X-482 this sub frame has been designed so that all tanks can be located below the floorboards, between the webs of the frame. This ensures that the

weight of the yacht's fuel and water is as low as possible, and that no locker space is lost to tankage. Solid hull laminations around the frame, which are linked to the hull by way of immensely strong GRP longitudinals, ensure unsurpassed protection against grounding damage and a 'belt and braces' keel to hull connection.

Above the waterline and on deck, various densities of foam core material are used in the lamination to gain stiffness and insulating properties whilst saving unnecessary weight. All laminations and construction scantlings for the X-482 were developed in conjunction with ABS (American Bureau of Shipping) and leading lamination specialists, SP Systems.

X-Yachts place great emphasis on concentrating all heavy equipment as close to the centre of the yacht as possible. Thus engine, generator (optional), tanks, batteries and the like are located towards the middle of the yacht, and as low down as is practically possible. Such attention to detail allows the X-482 to outperform her rivals - comfortably.





GODENWIND

WIND



TO BE THE BEST

The overall quality of the X-482 is of absolutely highest class. In achieving this, many of the typical X-Yachts features have been incorporated. Details such as the foam cored, hand crafted hull and deck, steel girder system, direct feel, large diameter wheel steering with roller bearings, first grade teak joinery, light GRP headliner and use of curved GRP mouldings for head compartments all make the X-482 stand out in a crowd. The X-482 combines a truly great sailing performance with unprecedented levels of on board comfort. Only by bringing out the very best in terms of design and construction has this been achieved, and the result is a modern classic with a timeless appeal. The deck layout satisfies the needs of both the short handed sailor and the racing yachtsman alike. Features that make the X-482 stand out in this



department include a large cockpit designed without the hindrance of a bridge deck, a removable cockpit table (which can be set up without interfering with the mainsheet whilst sailing), and a winch package that allows for the option of electrical primary winches that can be used to operate all the control lines including mainsheet and halyards. The boat is offered as standard with all the correct electrical, plumbing and mechanical equipment to satisfy the most demanding client. Also, the boat is built ready to accept certain 'cruising extras' such as a generator, air conditioning, water makers and the like. Hence the X-482 leaves the yard with ample stainless steel tankage (all with digital readouts of contents), a powerful 75 HP engine, shore power connection, battery charger, anchor windlass and space for installation of additional equipment.







INNER VISION

-Yachts' vision when creating the X-482 was of a truly luxurious yacht with a rich yet contemporary interior. The use of numerous moulds in the production process has allowed the interior designers of the X-482 to achieve this and much more. A light and airy feel to the interior has been achieved by using a white moulded GRP headliner into which are recessed halogen lights. A total of 18 opening ports and deck hatches allow for excellent ventilation and natural light below deck. The floor board system of the X-482 deserves special mention. It was felt that unrestricted access to the bilge space was desirable, yet this posed the problem of

devising a rigid and light floor board that would not warp or bend under changing temperature and humidity.

The solution was to build honeycomb cored (28 mm thick) floorboards. These are light, incredibly stiff, but more importantly, silent when crew is moving about the cabin. Hand selected and matched teak veneers are used throughout the interior, and from door handles to sink faucets, drawer faces to counter tops, every effort has been made to give the interior a homogeneous look and feel. Small details such as closet lights and solenoid controlled interior light switches all help make the X-482 your home away from home.



Galley Modern Layout



Sofa Arrangement
Modern Layout





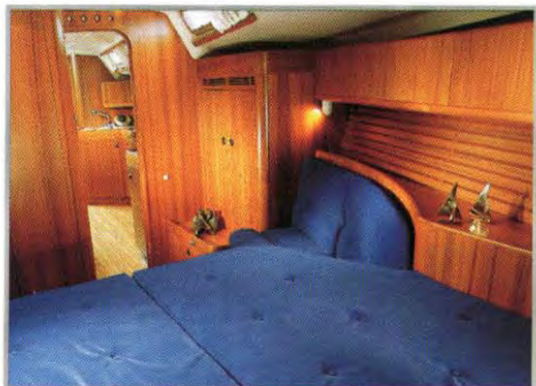
SPECIAL TREATMENT

The interior of the X-482 has received special treatment from X-Yachts in-house design team. The moulded contoured companionway steps have been left unvarnished to enhance the natural non-skid quality of the teak. The steps hinge out to give excellent access to the main engine, and the white melamine fascia to the companionway module will ensure that it keeps its new

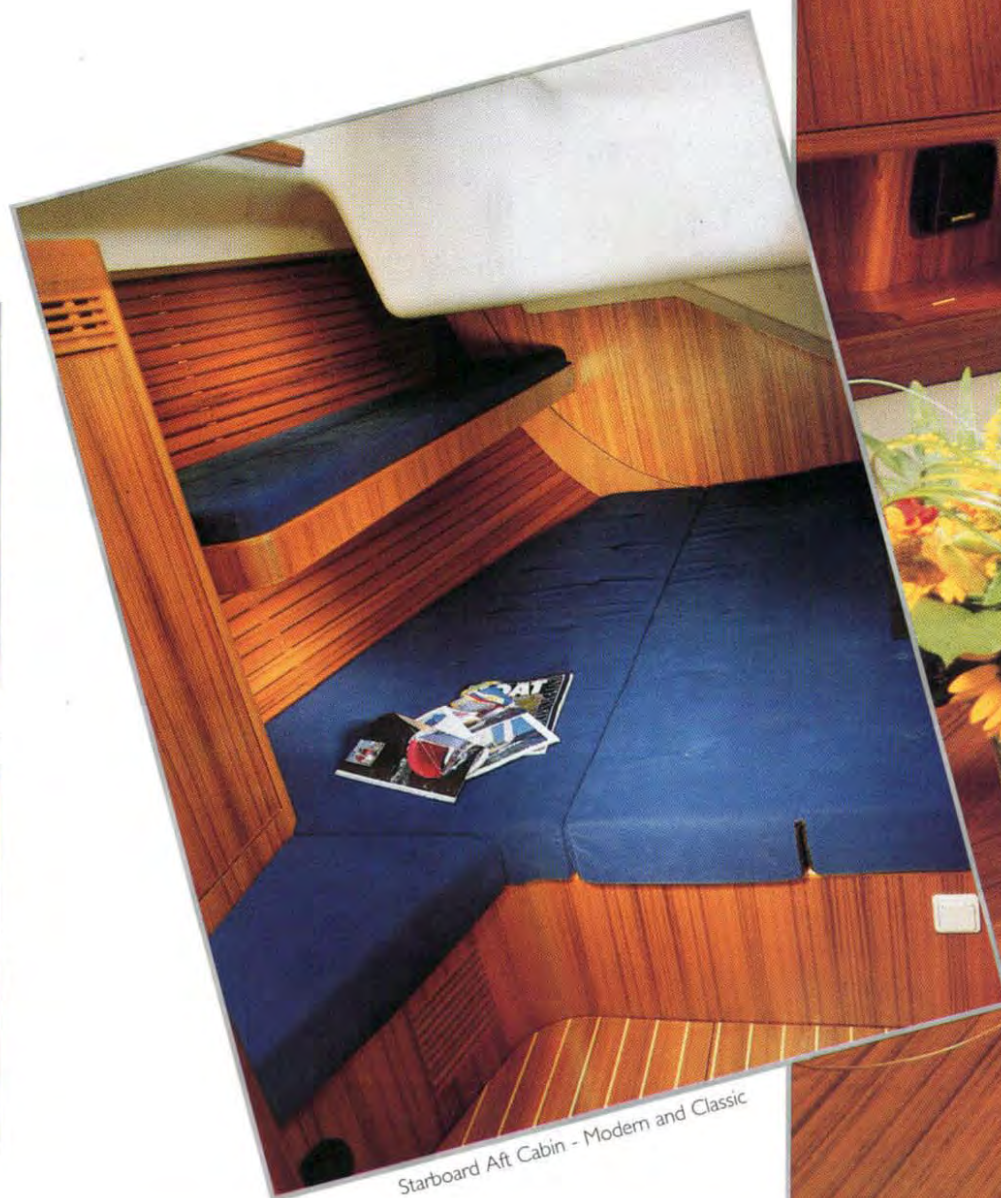
look while other finishes might start to show the ravages of time. Ease of maintenance of the interior is high on the priority list, and the GRP inner liners to the head / shower compartments take care of this potential problem area. This creates an overall feel of a light, airy interior which is practical at sea, yet offers all the creature comforts that you will demand once in harbour.



Navigation Station - Modern Layout



Owners' Cabin - Modern and Classic



Starboard Aft Cabin - Modern and Classic



Main Cabin
Modern Layout



MODERN OR CLASSIC

The X-482 is delivered with 4 possible interiors (see following pages). A »Modern« interior, with a large galley to port, and an uncluttered sofa arrangement opposite will suit most owners, whereas a more traditional arrangement with longitudinal berths and pipe cots in the saloon appeals to the offshore sailor who is seeking a more »Classic« interior.

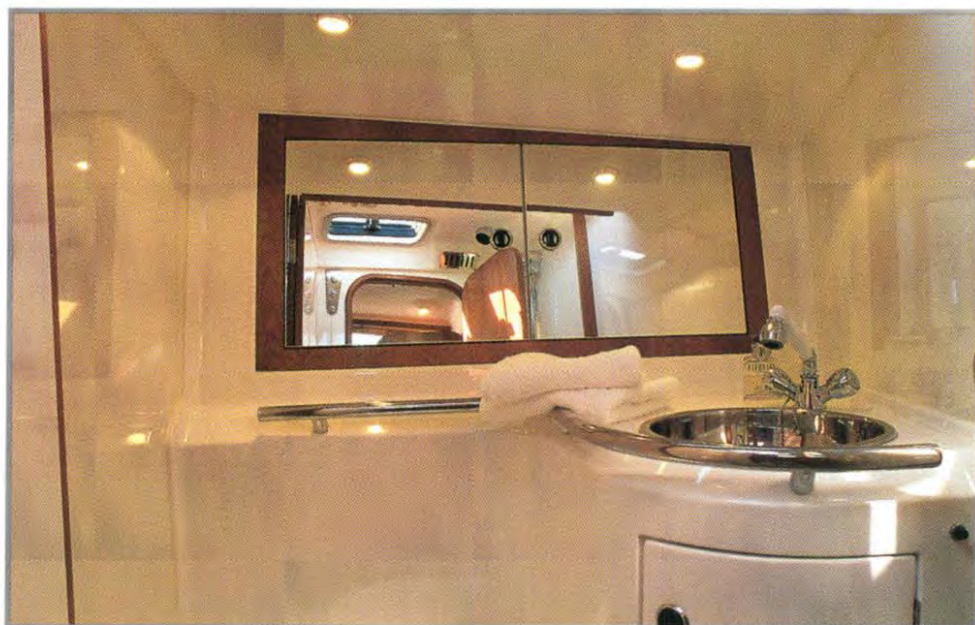
Both the »Classic« and »Modern« layouts are offered with a choice of either 3 or 4 cabins, and all interior options include 2 heads (one to port and one to starboard), pilot berths in the aft cabins, a sail bin which is separated from the accommodation by a watertight bulkhead, and a self-draining anchor locker.

Whether you choose the »Modern« layout, or opt for the »Classic« version, the navigation station is designed to afford a secure working area with ample space for radio equipment and instrumentation. The electrical panel hinges open to allow easy access to the yacht's wiring and distribution panels. Likewise the galley is provided with plenty of countertop space and stowage, and provision has been made for installation of a microwave oven (optional).

Galley
Classic
Layout



Navigation Station - Classic Layout



Owners' Head Compartment



Main Cabin
Classic Layout
Built-in Cabinets on request





TRULY OUTSTANDING

On deck, as well as below deck, every effort has been made to maintain a clean and elegantly simple look whilst incorporating all the deck hardware and sail controls that are required to operate a yacht of this size efficiently - whether short handed or fully crewed. Halyards and control lines lead to the cockpit through recessed channels to banks of rope clutches, and if the optional electrical primary winches are chosen, all normal sailing manoeuvres can be carried out with the aid of the electrical winches. A refreshing approach has been taken to the problem of wash board stowage on the X-482.

These are now captives in their own garage at the companionway entrance. No more, "where did I put the washboards?", at the end of the day's sail.

Another key feature of the X-482 is the discreetly mounted sprayhood. As on the X-612, the sprayhood can be completely stowed away into a deck moulding forward of the main sliding hatch.

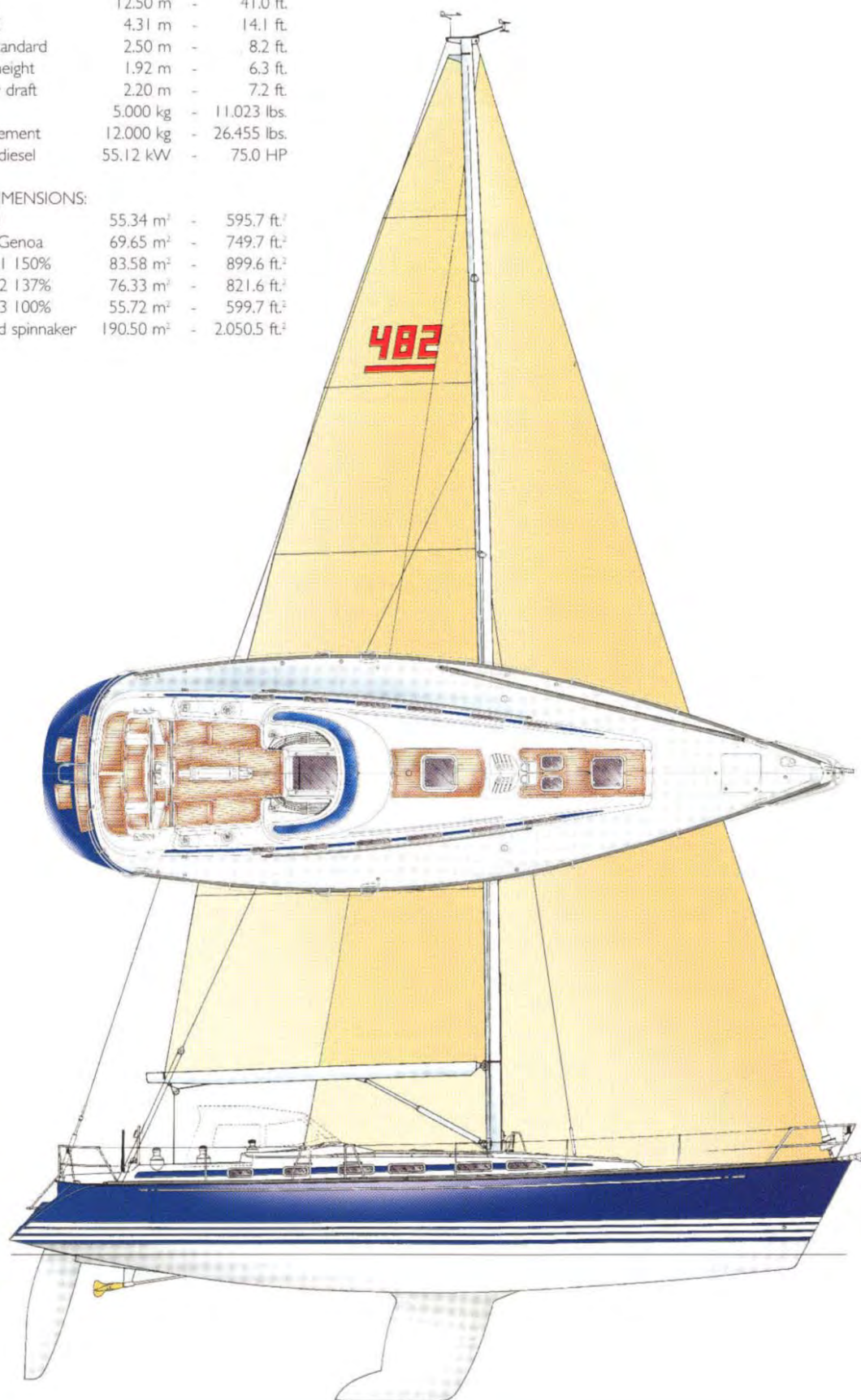
When deployed the sprayhood provides excellent protection for the crew, yet maintains full forward visibility from the helm, a must for cruising, and a real bonus for the offshore racer.

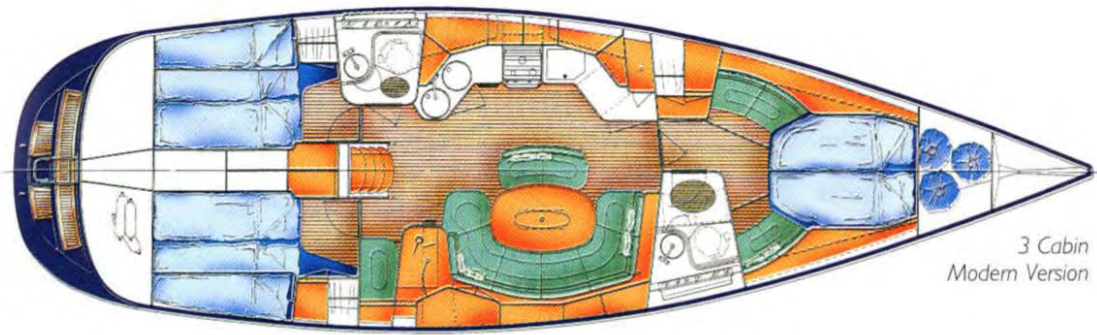
SAIL DIMENSIONS:

L.O.A.	14.50 m	-	48.0 ft.
LWL	12.50 m	-	41.0 ft.
B MAX	4.31 m	-	14.1 ft.
Draft standard	2.50 m	-	8.2 ft.
Cabin height	1.92 m	-	6.3 ft.
Shallow draft	2.20 m	-	7.2 ft.
Ballast	5.000 kg	-	11.023 lbs.
Displacement	12.000 kg	-	26.455 lbs.
Engine diesel	55.12 kW	-	75.0 HP

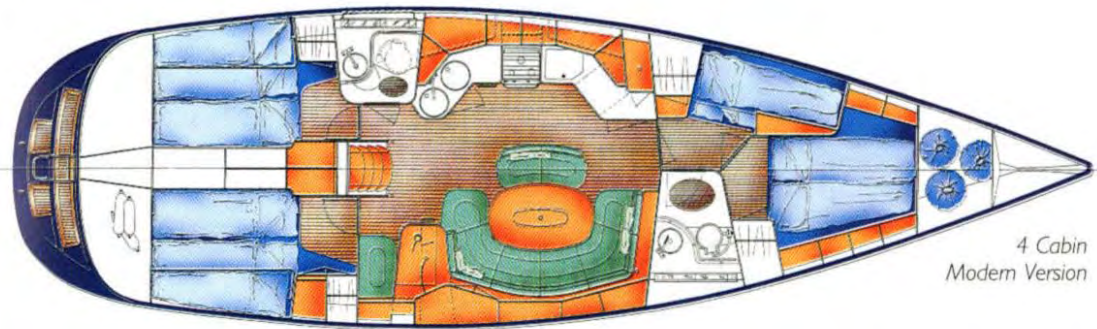
SAIL DIMENSIONS:

Mainsail	55.34 m ²	-	595.7 ft. ²
Furling Genoa	69.65 m ²	-	749.7 ft. ²
Genoa 1 150%	83.58 m ²	-	899.6 ft. ²
Genoa 2 137%	76.33 m ²	-	821.6 ft. ²
Genoa 3 100%	55.72 m ²	-	599.7 ft. ²
Allround spinnaker	190.50 m ²	-	2.050.5 ft. ²

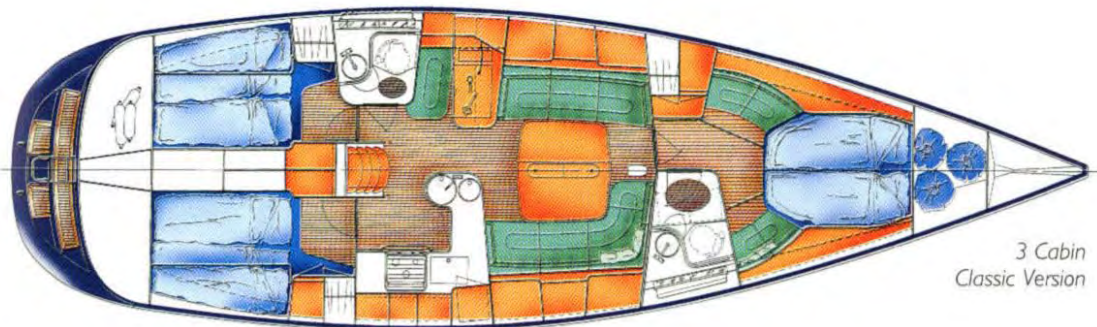




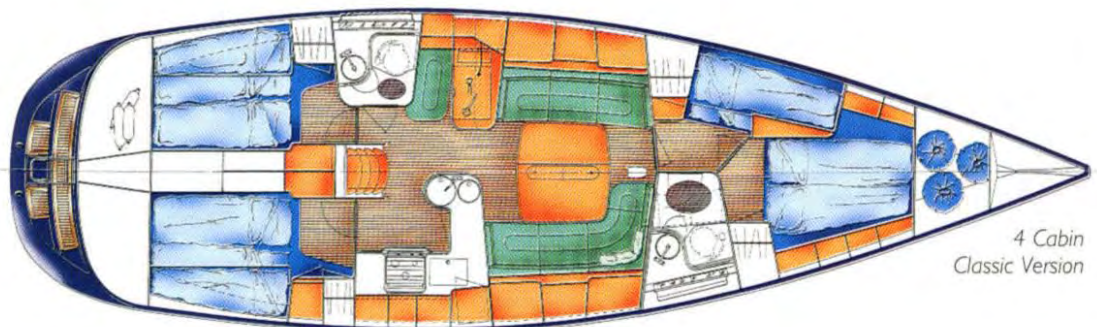
3 Cabin
Modern Version



4 Cabin
Modern Version



3 Cabin
Classic Version



4 Cabin
Classic Version





THE CREATIVE PROCESS

In developing the X-482 we were very fortunate in being able to bring together a highly skilled and motivated group of people with one goal in mind - the production of a truly classic, high performance blue water cruising yacht.

The performance of X-482 perfectly represents the X-Yachts philosophy of the yacht's design pleasing the

eye, built to a very high standard, exceptional sailing performance and fulfilling the role of a cruiser without compromise.

The X-482 is the embodiment of this philosophy and X-Yachts is proud to present her looks and talents in this brochure.

Niels Jeppesen

Birger Hansen

Lars Jeppesen



X-Yachts
WORLD CLASS SAILING YACHTS

Fjordagervej 21 · DK-6100 Haderslev · Denmark
Tel. int. + 45 74 52 10 22 · Fax. +45 74 53 03 97
e-mail: info@x-yachts.com - www.x-yachts.com

This brochure is not contractual.
All descriptions, illustrations, etc.
are only for indication.
X-YACHTS reserves the right to
modify or improve our
specifications without notice.

Haderslev Stiftsbogtrykkeren 74 522 522
August 2000 · 8078